

## TECHNICAL DATA

■ Displacement	2.09 cc
■ Bore×Stroke	14.0×13.0 mm
■ Rotational speed	3,000~12,000 rpm

■ Weight	160 g
■ Mount size	34.0×12.0 mm
■ Muffler	MC154 (with choke nipple)

## ◇ SUITABLE PROPELLERS

	11CX DIESEL	U11CX DIESEL	SS15 DIESEL
C/L	9×4~5	9×5~6	10×4, 9×6
R/C	9×4~5	9×5~6	10×4~5

## ◇ FUEL

ENYA U11CXD will operate satisfactorily on most kinds of model diesel fuel of high quality sold on the market. But take care of the following.

a) The best running positions of **compression adjusting screw (C.A.S.)** and needle valve vary according to the kind of fuel.

b) Ethyl ether (one of the chief components) is very volatile. And old fuel (reserved for a long time) sometimes causes troubles of non-starting, unsmooth-running, poor power, etc.

The standard mixing ratio of components is as follows.

COMPONENT	MIXING RATIO
Kerosene	36~37%
Ethyl ether	36~37%
Castor oil	25%
Amyl-nitrate(amyl-nitrite)	1~3%

## ◇ BREAKING IN

It is recommended to break your ENYA U11CXD in carefully with slightly rich mixture during 1/2 or 1 hour on a test stand to obtain maximum power and long life.

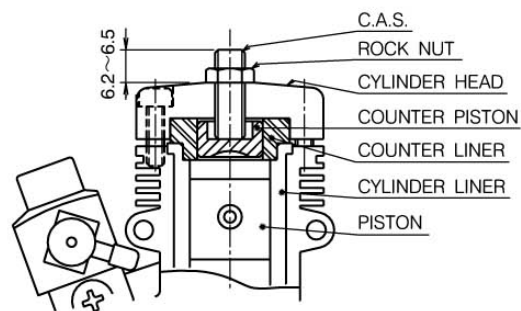
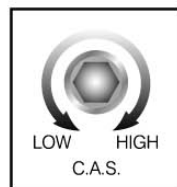
## ◇ CORRECT HANDLING OF THE C.A.S.

It is very important to confirm the correct positions of the C.A.S. and handle it properly to start and run a model diesel engine. The engine may be broken if it is handled improperly. The best position of the C.A.S. of ENYA U11CXD for starting and running is usually between 6.2 ~ 6.5 mm from the top of the cylinder head. The C.A.S. of each ENYA U11CXD is set in the best position for starting at the factory.

## ◇ STARTING ENYA U11CX DIESEL

ENYA U11CXD will start very easily by proper handling.

1. Close the needle valve, and fill the fuel tank with fuel.
2. Prime the engine by injecting several drops of fuel both in the intake and exhaust port, and the needle valve 2 or 2 1/2 turns.
3. Crank the engine until clockwise quickly by flipping the propeller with your finger. The engine should start by 10 ~ 20 good flicks when the fuel is of good quality, and the quantity of fuel injected and the compression ratio are proper.
  - in case the engine neither starts nor knocks in 20 ~ 30 flicks, screw up the C.A.S. 1/8 or 1/4 turns continuing, flipping the propeller.
  - In case the engine pre-ignition and knocks, slack off the C.A.S. 1/8 ~ 1/4 turns.
  - If the engine stops after a short running, open the needle valve more 1/4 ~ 1/2 turn, and continue to flip the propeller after priming.
  - As the overflowed fuel from the carburetor into crankcase makes starting the engine difficult, take care the fuel surface in the tank is not too high.
4. Once your engine starts, adjust the needle valve and the C.A.S. alternately and gradually to the best running position. **DO NOT RAISE THE COMPRESSION SO HIGHLY AS THE ENGINE SLOWS DOWN.** This is very harmful for the engine.
5. In case the C.A.S. of your ENYA U11CXD has the tendency of loosening while it is running, use the locking nut enclosed in the box.

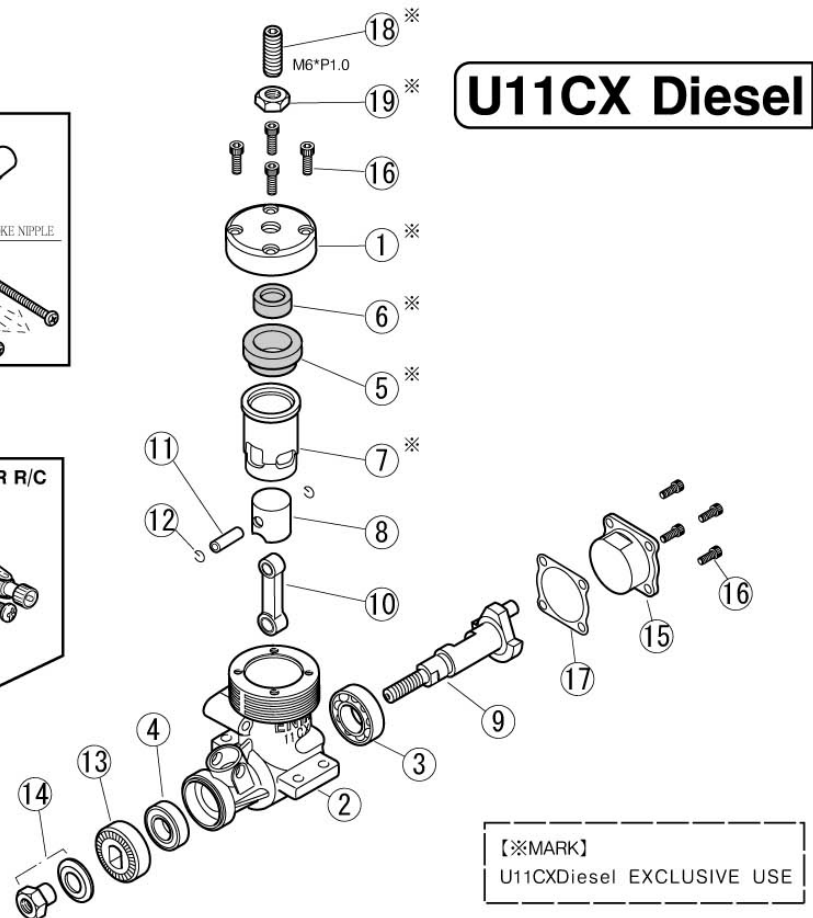
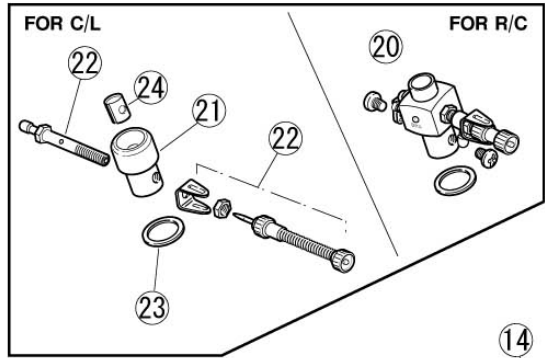
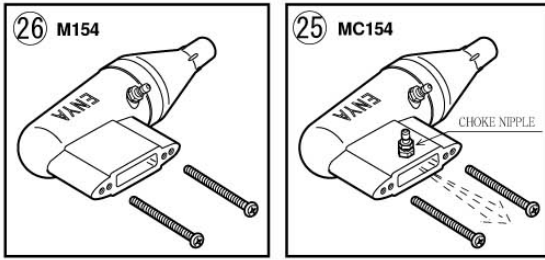


## ◇ OTHER NOTE

1. Do not disassemble your engine needlessly.
2. If you find some defective parts or workmanship in your new engine, return it to our factory. We will repair it free of charge.

# DRAWING DETAIL

# U11CX Diesel



## PARTS LIST

No.	Part of name	Qty.	Part No.
1	CYLINDER HEAD	1	11CXD01
2~4	CRANK CASE (with ball bearings)	1set	U11CX03
2	CRANK CASE	1	11CX03A
3	BALL BEARING A	1	11CX03B
4	BALL BEARING B	1	11CX03C
5~6	COUNTER LINER/PISTON ASSY	1set	U11CXD02
5	COUNTER LINER	1	U11CXD02A
6	COUNTER PISTON	1	11CXD02B
7~8	CYL. LINER/PISTON ASSY	1set	U11CXD04
7	CYLINDER LINER	1	U11CXD04A
8	PISTON	1	U11CX04B
9	CRANK SHAFT	1	U11CX08
10	CONNECTING ROD	1	11CX05
11	PISTON PIN	1	U11CX06
12	PISTON PIN STOP RING (2pcs)	1	19X61
13	DRIVE WASHER	1	11CX10
14	LONG PROPELLER NUT	1	11CX14S
15	BACK PLATE	1	11CX09

No.	Name of part	Qty.	Part No.
16	SETTING SCREW SET	1set	11CX15B
	C3*10, 4PCS		
	C2.6*6, 4PCS		
17	BACK PLATE GASKET	1	11CX16
18	COMPRESSION ADJ. SCREW	1	11CXD17
19	ROCK NUT	1	11CXD18
【FOR R/C】			
20	THROTTLE VALVE ASSY	1set	11CX40
【FOR C/L】			
21	VENTURI	1	195B21
22	NEEDLE VALVE ASSY	1	15220
23	VENTURI GASKET	1	15323
24	VENTURI INSERT	1	195B21V
【NORMAL MAFFLER】			
25	MUFFLER (with choke nipple)	1	MC154
【OPTION MUFFLER】			
26	MUFFLER	1	M154