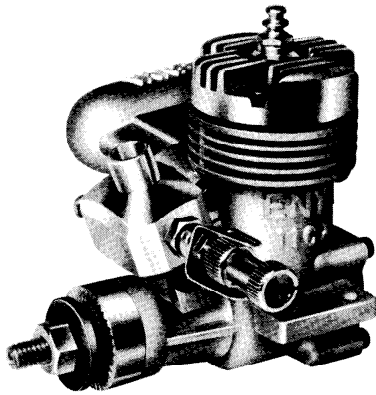
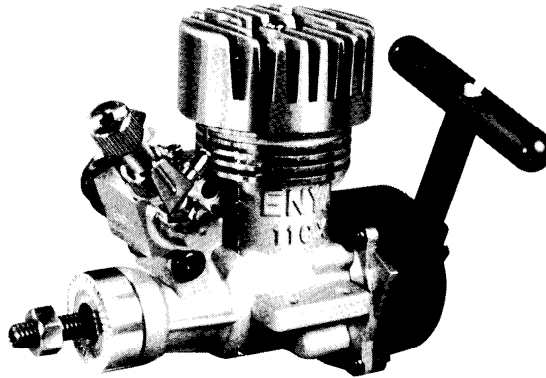


ENYA 11CX Series (1.8 cc)

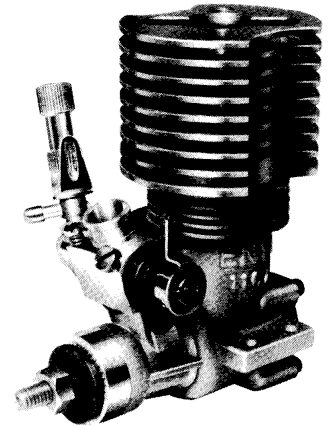
ULTRA 11CX Series (2.1 cc)



11CX



11CXCT RS (Recoil Starter)



ULTRA 11CXCT

✿ **DISTINCTIVE FEATURES**

1. HIGH POWER and TORQUE with excellent throttling
2. Sturdy and dependable
3. Easy handling

✿ **SPECIFICATIONS**

[Type] 2 cycle glow plug ignition, Schnuerle type scavenging with booster port.

	11CX	11CX CT	11CX CT RS	11CX Marine	11CX Marine RS	ULTRA 11CX CT	ULTRA 11CX CT RS
Applications	Sport, scale aircrafts	1/12 ~ 1/10 cars	—	Boats	—	1/10 cars	—
Cylinder bore × stroke mm	13.5 × 12.5	—	—	—	—	14.3 × 13.0	—
Displacement cc	1.79	—	—	—	—	2.09	—
Weight g	130	150	200	140	190	190	240
Cylinder liner	Al. alloy, chromed	—	—	—	—	Brass, chromed	—
Piston	High silicon Al. alloy	—	—	—	—	—	—
Carburetor	G4.5 (11CX40)	TN5.5 (11CXCT70)	—	—	—	—	—
Power range PS	0.3~0.4	—	0.3~0.36	0.3~0.4	0.3~0.36	0.4~0.5	0.4~0.46
Speed range r.p.m.	8,000~22,000	8,000~27,000	—	8,000~24,000	—	8,000~27,000	—
Idling speed r.p.m.	2,500~3,000	3,000~4,000	—	—	—	—	—
Suitable glow plug	ENYA No. 3, 4	—	—	—	—	—	—
Muffler	M11CX	—	—	M11CX	—	—	—

✿ **SPECIAL ATTENTION**

1. In general, a model engine is very powerful and runs at very high speed. Never handle it carelessly. "Safety first" is most important in all respects when you run a model engine.
2. Before you run your engine, take care of the following points.
 - Tighten the engine mounting screws and propeller nut once again.
 - Make sure that there is nobody near (except your assistant).
 - When you fly your plane, or run your car, it is most important to confirm that your radio control equipment works well. If you find a defective point on it, stop flying or running, and repair it perfectly.

✿ **FUEL**

ENYA 11CX and Ultra 11CX series will operate satisfactorily with most kinds of high quality glow plug engine fuel.

	STANDARD VOLUMETRIC RATIO OF FUEL COMPONENTS	
	High power	Normal
Castor oil or high quality synthetic oil	20%	20%
Nitro-methane	10~15%	0~10%
Methyl-alcohol	70~65%	80~70%

✿ **GLOW PLUG**

ENYA glow plug No. 3 and No. 4 are suitable to 11CX and Ultra 11CX series.

✿ **BREAKING-IN**

Run your engine with a rich mixture during first 1/2 hour. After this period, you may run it in full power. But it is very important to run the engine always with a slightly rich mixture. It will take 1~2 hours for the engine to reach its peak in power and smoothness.

✿ **HANDLING OF RECOIL STARTER**

1. The effective stroke length of the starter handle is 30~50 cm. It is very important to pull the handle within this stroke range.
2. Do not pull the starter handle when the engine is over flooded with fuel.
3. The proper opening of the needle valve for starting is 2~2 1/2 turns, and that of the throttle valve is 20~30%.
4. When you feel difficult to start the engine in cold weather, detach the glow plug, and inject 3~4 drops of fuel directly into the cylinder. The engine will start soon.

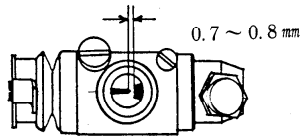
ENYA METAL PRODUCTS CO., LTD.

5-11-18 TOYOTAMA-KITA, NERIMAKU, TOKYO, JAPAN.

ADJUSTMENT OF TN CARBURETOR

ENYA TN type carburetors are adjusted at the factory to perform normally. But in case you need to reset the mixture control needle (4), the following process is recommended.

1. Open the throttle valve fully.
2. Check the clearance between the top ends of spray bar (11) and mixture control needle (4). When it is 0.7~0.8 mm, that's all right. No adjustment is needed.
3. If the clearance is too wide or too narrow, adjust the mixture control needle (4) with a driver, and reset the clearance at 0.7~0.8 mm.



4. Now your TN carburetor will perform normally. And when you want finer adjustment, do it while you really run the engine.

5. The starting method and the main needle valve (13) adjustment are almost same as in the case of the normal barrel type and ENYA G type carburetor. After the engine start, open the throttle valve fully, and adjust the needle valve slowly to the best running position. Then try "Hi-Lo" and "Lo-Hi" operation adjusting the needle valves.

Proper opening of main needle valve;

For starting

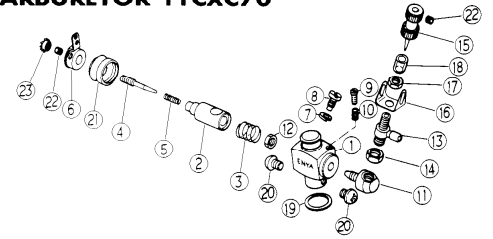
2~2½ turns

Best running

about 1½ turns

6. Usually it is recommended to pressurize the fuel tank with the muffler pressure to get a more constant engine running.

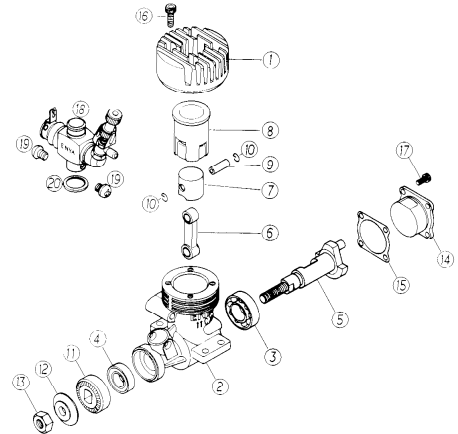
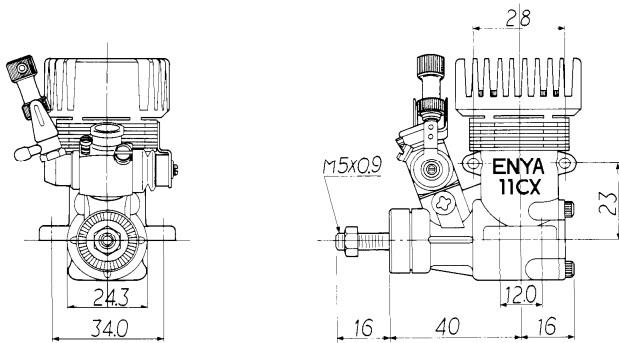
TN CARBURETOR 11CX70



PARTS LIST OF TN CARBURETOR

No. in drawing	Name of part	Part No.	No. in drawing	Name of part	Part No.
	Carburetor assembly	11CX70	12	Spray bar locking nut	S2570F4
1	TV body	11CX70A	13	Needle valve body	354C40F2
2	TV valve	11CX70B	14	Needle valve body locking nut	29440F4
3	Valve spring	S2570N	15	Needle	464C40F1
4	Mixture control needle	11CX70M1	16	Needle setting spring	15220C
5	Locking spring	S2570M2	17	Spring setting 4 mm nut	09230F5
6	Throttle lever	11CX70C	18	Seal of needle	S2570M
7	Spring washer	60X50R (M3)	19	Gasket of carburetor body	195B23
8	Valve guide screw	S2570Y		Carburetor assembly setting screws set	29440G
9	Idling speed adjusting screw	I5240H	20	Carburetor assembly setting screw	29440GA
10	Locking spring	I5240I	21	Gum boot	11CX70P
	Needle valve assembly	11CX70F	22	3 mm hollow screw	604C63
11	70° spray bar	11CX70F2	23	Needle adjuster	11CX70M3

11CX CT



PARTS LIST OF 11CX ENGINES

No. in drawing	Name of part	11CX	11CX CT	11CX CT RS	11CX Marine	11CX CT Marine RS	Ultra 11CX CT	Ultra 11CX CT RS
1	Cylinder head (die cast)	11CX02	11CX02C	—			U11CX02C1 (option)	—
	Cylinder head (machined)				11CX02M	—	U11CX02C2	—
2~4	Crank case assem.	11CX03	—	—	—	—	U11CX03	—
2	Crank case	11CX03A	—	—	—	—	U11CX03A	—
3	Ball bearing A	11CX03B	—	—	—	—	U11CX03B	—
4	Ball bearing B	11CX03C	—	—	—	—	U11CX03C	—
5	Crank shaft	11CX08	—	11CXRD08	11CX08	11CXRD08	U11CX08	U11CXRD08
6	Connecting rod	11CX05	—	—	—	—	—	—
7~8	Cylinder piston assem.	11CX04	—	—	—	—	U11CX04	—
9	Piston pin	11CX06	—	—	—	—	U11CX06	—
10	Piston pin stop ring	19X61	—	—	—	—	—	—
11	Drive washer	11CX10	—	—	—	—	—	—
12	Propeller washer	09212	—	—	—	—	—	—
13	Propeller nut	09214	—	—	—	—	—	—
14	Back plate	11CX09	—	11CXRD09A	11CX09	11CXRD09A	11CX09	11CXRD09A
	Rear shaft			11CXRD81		11CXRD81		11CXRD81
15	Back plate gasket	11CX16	—	—	—	—	—	—
16	Screw for cylinder head	19X15C	354C15A	—	—	—	—	—
17	Screw for back plate	11CX15A	—	—	—	—	—	—
	Head gasket	11CX65	—	11CX65	—	—	—	U11CX65
18~20	Carburetor assem.	11CX40	11CX70	—	—	—	—	—
	Recoil starter unit			RS111		RS111		RS111
	Starter unit setting screw			11CX19A		11CX19A		11CX19A